

SCALE: 1 INCH = 100 FEET

CACHE NATIONAL FOREST
GARDEN CITY LIMIT INSIDE

LAKEVIEW DRIVE

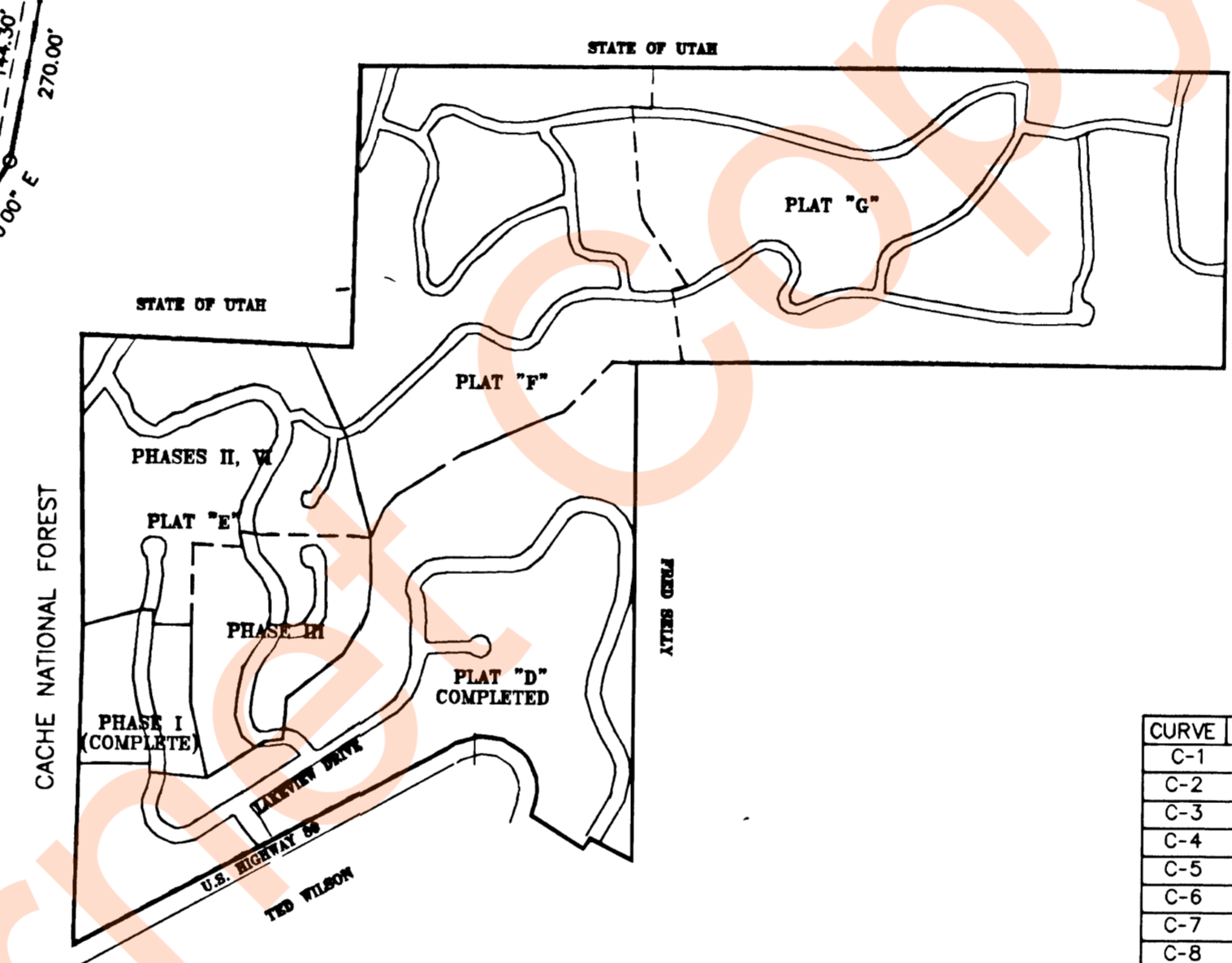
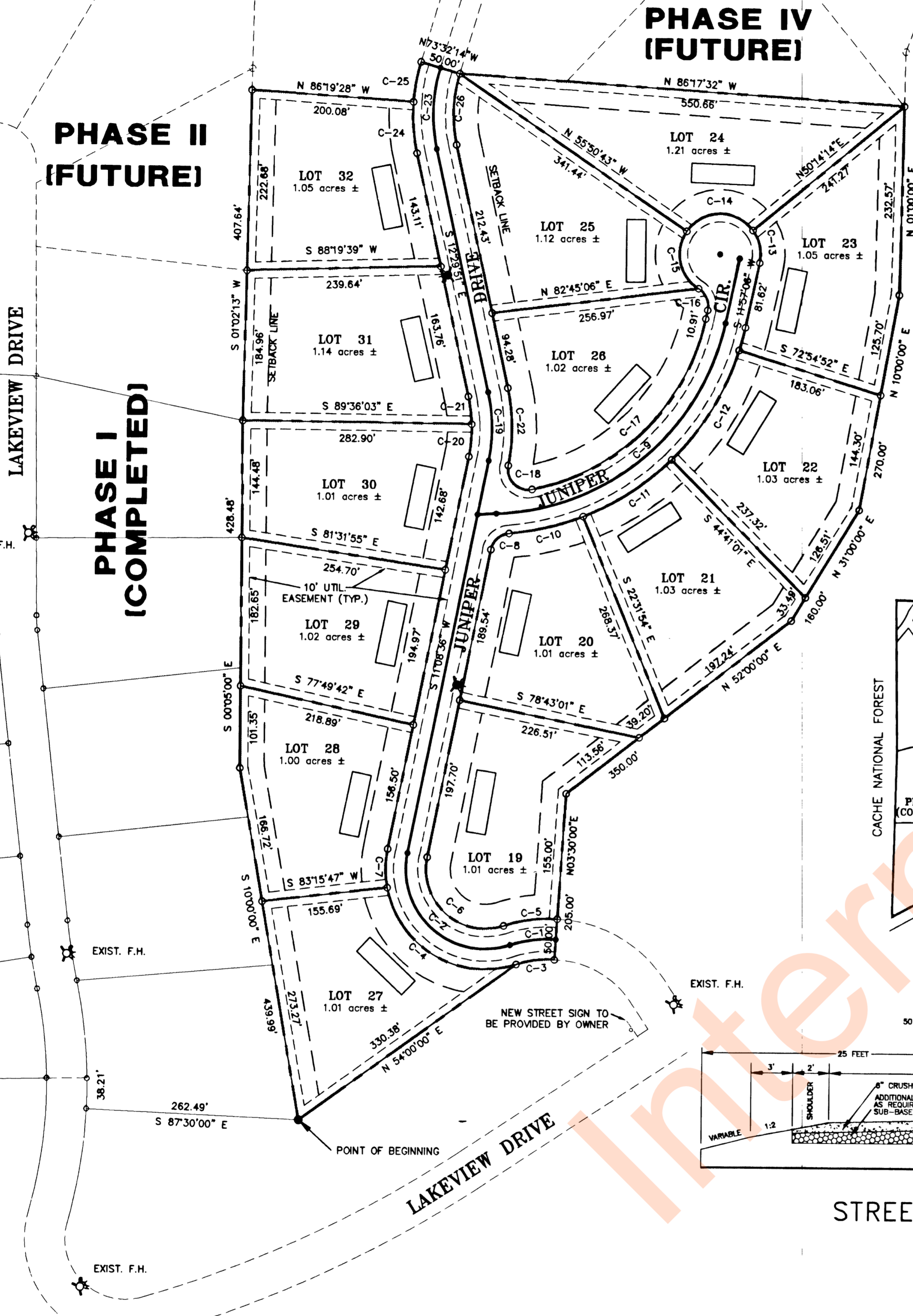
PHASE II
(FUTURE)

PHASE I
(COMPLETED)

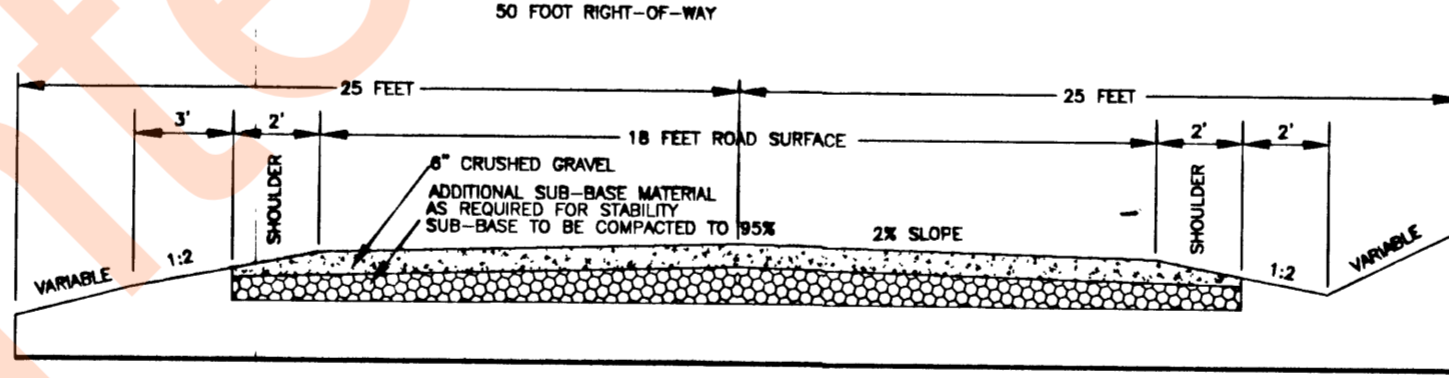
PHASE IV
(FUTURE)

FINAL PLAT BRIDGERLAND VILLAGE PLAT "E", PHASE III

SECTION 30, TOWNSHIP 14 NORTH, RANGE 5 EAST
SALT LAKE BASE AND MERIDIAN
GARDEN CITY, UTAH



- 5/8" REBAR AND PLASTIC CAPS SET AT ALL PROPERTY CORNERS.
- 30' SET BACK FOR FRONT AND BACK YARDS
10' SET BACK FOR SIDE YARDS.
- 10' WIDE PUBLIC UTILITY EASEMENT AS SHOWN
- STORM RUN OFF WILL BE DISCHARGED ON THE LOT OWNER'S LAND OR INTO EXISTING NATURAL DRAINAGE CHANNELS.
- CULINARY WATER WILL COME FROM THE RESERVOIRS LOCATED ABOVE PLAT "C".
- ALL LOTS HAVE THE MINIMUM ONE ACRE REQUIRED BY THE STATE BOARD OF HEALTH FOR SEPTIC TANKS.
- TOTAL ACREAGE THIS PHASE: 16.88 acres ±



STREET CROSS SECTION

CURVE	RADIUS	LENGTH	TANGENT	CHORD	BEARING	DELTA
C-1	150.00'	57.59'	29.16'	57.24'	S 82°29'58" W	21°59'56"
C-2	98.31'	205.28'	169.05'	169.96'	N 48°40'42" W	119°38'36"
C-3	125.00'	47.99'	24.30'	47.70'	N 82°29'58" E	21°59'56"
C-4	123.31'	209.61'	140.35'	185.27'	S 59°48'05" E	97°23'50"
C-5	175.00'	67.19'	34.02'	66.78'	S 82°29'59" W	21°59'57"
C-6	73.31'	153.08'	126.06'	126.74'	S 48°40'42" E	119°38'36"
C-7	123.31'	47.88'	24.24'	47.58'	N 00°01'13" E	22°14'46"
C-8	25.00'	32.20'	18.77'	30.02'	S 48°02'27" W	73°47'41"
C-9	300.00'	395.93'	232.77'	367.81'	S 49°45'36" W	75°37'00"
C-10	325.00'	94.09'	47.38'	93.77'	S 76°38'39" W	16°35'18"
C-11	325.00'	130.65'	66.22'	129.78'	S 56°49'59" W	23°02'01"
C-12	325.00'	160.13'	81.73'	158.52'	N 31°12'04" E	28°13'50"
C-13	50.00'	42.41'	22.57'	41.15'	S 88°45'23" W	109°12'11"
C-14	50.00'	95.30'	70.36'	81.51'	S 12°12'40" E	92°43'54"
C-15	50.00'	80.92'	52.44'	72.38'	S 12°12'40" E	92°43'54"
C-16	25.00'	30.77'	17.68'	28.87'	S 23°18'45" E	70°31'44"
C-17	275.00'	317.71'	179.25'	300.33'	S 45°02'54" W	66°11'36"
C-18	25.00'	49.40'	37.92'	41.75'	S 45°14'52" W	113°12'52"
C-19	200.00'	85.09'	43.20'	84.45'	N 01°02'42" W	24°22'36"
C-20	175.00'	40.23'	20.21'	40.15'	N 04°33'25" E	131°02'33"
C-21	175.00'	34.38'	17.25'	34.33'	N 07°39'29" W	111°52'24"
C-22	224.96'	96.25'	48.87'	95.52'	S 00°53'49" E	24°30'55"
C-23	200.00'	101.09'	51.65'	100.02'	N 01°58'58" E	28°57'37"
C-24	225.00'	63.51'	31.97'	63.30'	N 04°24'40" W	161°02'33"
C-25	225.00'	50.22'	25.21'	50.11'	N 10°04'09" E	12°47'14"
C-26	175.00'	88.45'	45.19'	87.52'	S 01°58'58" W	28°57'37"

CERTIFICATE OF SURVEY

I, WAYNE CROW, DO HEREBY CERTIFY THAT I AM A REGISTERED LAND SURVEYOR, AND THAT I HOLD CERTIFICATE NO. 6182, AS PRESCRIBED UNDER THE LAWS OF THE STATE OF UTAH. I FURTHER CERTIFY THAT BY THE AUTHORITY OF THE OWNERS, I HAVE MADE A SURVEY OF THE TRACT OF LAND SHOWN ON THIS PLAT AND DESCRIBED BELOW, AND HAVE SUBDIVIDED SAID TRACT INTO LOTS AND STREETS, HEREINAFTER TO BE KNOWN AS: BRIDGERLAND VILLAGE PLAT "E", PHASE III, AND THE SAME HAS BEEN CORRECTLY SURVEYED AND ALL STREETS ARE THE DIMENSIONS SHOWN.

BOUNDARY DESCRIPTION

BRIDGERLAND VILLAGE PLAT "E", PHASE III, GARDEN CITY, UTAH, PROJECT #94-103

LEGAL DESCRIPTION

BEING PART OF THE NORTHWEST QUARTER OF SECTION 30, TOWNSHIP 14 NORTH, RANGE 5 EAST OF THE SALT LAKE BASE AND MERIDIAN WITH THE FOLLOWING DESCRIPTION:

COMMENCING AT THE EAST QUARTER CORNER OF SECTION 25, T. 14 N., R. 4 E., S.L.B. & M., THENCE N 0°05'00" W, 644.81 FEET; THENCE N 89°00'00" E, 402.55 FEET; THENCE S 88°19'39" W, 200.06 FEET; THENCE S 89°36'03" E, 239.64 FEET; THENCE S 81°31'55" E, 282.90 FEET; THENCE S 77°49'42" E, 254.70 FEET; THENCE S 00°05'00" E, 100.00 FEET; THENCE S 03°15'47" W, 155.69 FEET; THENCE S 07°30'00" E, 87.30 FEET; THENCE S 00°05'00" E, 644.81 FEET; THENCE N 89°00'00" E, 402.55 FEET; THENCE S 88°19'39" W, 200.06 FEET; THENCE S 89°36'03" E, 239.64 FEET; THENCE S 81°31'55" E, 282.90 FEET; THENCE S 77°49'42" E, 254.70 FEET; THENCE S 00°05'00" E, 100.00 FEET; THENCE S 03°15'47" W, 155.69 FEET; THENCE S 07°30'00" E, 87.30 FEET; THENCE S 00°05'00" E, 644.81 FEET; THENCE N 89°00'00" E, 402.55 FEET; THENCE S 88°19'39" W, 200.06 FEET; THENCE S 89°36'03" E, 239.64 FEET; THENCE S 81°31'55" E, 282.90 FEET; THENCE S 77°49'42" E, 254.70 FEET; THENCE S 00°05'00" E, 100.00 FEET; THENCE S 03°15'47" W, 155.69 FEET; THENCE S 07°30'00" E, 87.30 FEET; THENCE S 00°05'00" E, 644.81 FEET; THENCE N 89°00'00" E, 402.55 FEET; THENCE S 88°19'39" W, 200.06 FEET; THENCE S 89°36'03" E, 239.64 FEET; THENCE S 81°31'55" E, 282.90 FEET; THENCE S 77°49'42" E, 254.70 FEET; THENCE S 00°05'00" E, 100.00 FEET; THENCE S 03°15'47" W, 155.69 FEET; THENCE S 07°30'00" E, 87.30 FEET; THENCE S 00°05'00" E, 644.81 FEET; THENCE N 89°00'00" E, 402.55 FEET; THENCE S 88°19'39" W, 200.06 FEET; THENCE S 89°36'03" E, 239.64 FEET; THENCE S 81°31'55" E, 282.90 FEET; THENCE S 77°49'42" E, 254.70 FEET; THENCE S 00°05'00" E, 100.00 FEET; THENCE S 03°15'47" W, 155.69 FEET; THENCE S 07°30'00" E, 87.30 FEET; THENCE S 00°05'00" E, 644.81 FEET; THENCE N 89°00'00" E, 402.55 FEET; THENCE S 88°19'39" W, 200.06 FEET; THENCE S 89°36'03" E, 239.64 FEET; THENCE S 81°31'55" E, 282.90 FEET; THENCE S 77°49'42" E, 254.70 FEET; THENCE S 00°05'00" E, 100.00 FEET; THENCE S 03°15'47" W, 155.69 FEET; THENCE S 07°30'00" E, 87.30 FEET; THENCE S 00°05'00" E, 644.81 FEET; THENCE N 89°00'00" E, 402.55 FEET; THENCE S 88°19'39" W, 200.06 FEET; THENCE S 89°36'03" E, 239.64 FEET; THENCE S 81°31'55" E, 282.90 FEET; THENCE S 77°49'42" E, 254.70 FEET; THENCE S 00°05'00" E, 100.00 FEET; THENCE S 03°15'47" W, 155.69 FEET; THENCE S 07°30'00" E, 87.30 FEET; THENCE S 00°05'00" E, 644.81 FEET; THENCE N 89°00'00" E, 402.55 FEET; THENCE S 88°19'39" W, 200.06 FEET; THENCE S 89°36'03" E, 239.64 FEET; THENCE S 81°31'55" E, 282.90 FEET; THENCE S 77°49'42" E, 254.70 FEET; THENCE S 00°05'00" E, 100.00 FEET; THENCE S 03°15'47" W, 155.69 FEET; THENCE S 07°30'00" E, 87.30 FEET; THENCE S 00°05'00" E, 644.81 FEET; THENCE N 89°00'00" E, 402.55 FEET; THENCE S 88°19'39" W, 200.06 FEET; THENCE S 89°36'03" E, 239.64 FEET; THENCE S 81°31'55" E, 282.90 FEET; THENCE S 77°49'42" E, 254.70 FEET; THENCE S 00°05'00" E, 100.00 FEET; THENCE S 03°15'47" W, 155.69 FEET; THENCE S 07°30'00" E, 87.30 FEET; THENCE S 00°05'00" E, 644.81 FEET; THENCE N 89°00'00" E, 402.55 FEET; THENCE S 88°19'39" W, 200.06 FEET; THENCE S 89°36'03" E, 239.64 FEET; THENCE S 81°31'55" E, 282.90 FEET; THENCE S 77°49'42" E, 254.70 FEET; THENCE S 00°05'00" E, 100.00 FEET; THENCE S 03°15'47" W, 155.69 FEET; THENCE S 07°30'00" E, 87.30 FEET; THENCE S 00°05'00" E, 644.81 FEET; THENCE N 89°00'00" E, 402.55 FEET; THENCE S 88°19'39" W, 200.06 FEET; THENCE S 89°36'03" E, 239.64 FEET; THENCE S 81°31'55" E, 282.90 FEET; THENCE S 77°49'42" E, 254.70 FEET; THENCE S 00°05'00" E, 100.00 FEET; THENCE S 03°15'47" W, 155.69 FEET; THENCE S 07°30'00" E, 87.30 FEET; THENCE S 00°05'00" E, 644.81 FEET; THENCE N 89°00'00" E, 402.55 FEET; THENCE S 88°19'39" W, 200.06 FEET; THENCE S 89°36'03" E, 239.64 FEET; THENCE S 81°31'55" E, 282.90 FEET; THENCE S 77°49'42" E, 254.70 FEET; THENCE S 00°05'00" E, 100.00 FEET; THENCE S 03°15'47" W, 155.69 FEET; THENCE S 07°30'00" E, 87.30 FEET; THENCE S 00°05'00" E, 644.81 FEET; THENCE N 89°00'00" E, 402.55 FEET; THENCE S 88°19'39" W, 200.06 FEET; THENCE S 89°36'03" E, 239.64 FEET; THENCE S 81°31'55" E, 282.90 FEET; THENCE S 77°49'42" E, 254.70 FEET; THENCE S 00°05'00" E, 100.00 FEET; THENCE S 03°15'47" W, 155.69 FEET; THENCE S 07°30'00" E, 87.30 FEET; THENCE S 00°05'00" E, 644.81 FEET; THENCE N 89°00'00" E, 402.55 FEET; THENCE S 88°19'39" W, 200.06 FEET; THENCE S 89°36'03" E, 239.64 FEET; THENCE S 81°31'55" E, 282.90 FEET; THENCE S 77°49'42" E, 254.70 FEET; THENCE S 00°05'00" E, 100.00 FEET; THENCE S 03°15'47" W, 155.69 FEET; THENCE S 07°30'00" E, 87.30 FEET; THENCE S 00°05'00" E, 644.81 FEET; THENCE N 89°00'00" E, 402.55 FEET; THENCE S 88°19'39" W, 200.06 FEET; THENCE S 89°36'03" E, 239.64 FEET; THENCE S 81°31'55" E, 282.90 FEET; THENCE S 77°49'42" E, 254.70 FEET; THENCE S 00°05'00" E, 100.00 FEET; THENCE S 03°15'47" W, 155.69 FEET; THENCE S 07°30'00" E, 87.30 FEET; THENCE S 00°05'00" E, 644.81 FEET; THENCE N 89°00'00" E, 402.55 FEET; THENCE S 88°19'39" W, 200.06 FEET; THENCE S 89°36'03" E, 239.64 FEET; THENCE S 81°31'55" E, 282.90 FEET; THENCE S 77°49'42" E, 254.70 FEET; THENCE S 00°05'00" E, 100.00 FEET; THENCE S 03°15'47" W, 155.69 FEET; THENCE S 07°30'00" E, 87.30 FEET; THENCE S 00°05'00" E, 644.81 FEET; THENCE N 89°00'00" E, 402.55 FEET; THENCE S 88°19'39" W, 200.06 FEET; THENCE S 89°36'03" E, 239.64 FEET; THENCE S 81°31'55" E, 282.90 FEET; THENCE S 77°49'42" E, 254.70 FEET; THENCE S 00°05'00" E, 100.00 FEET; THENCE S 03°15'47" W, 155.69 FEET; THENCE S 07°30'00" E, 87.30 FEET; THENCE S 00°05'00" E, 644.81 FEET; THENCE N 89°00'00" E, 402.55 FEET; THENCE S 88°19'39" W, 200.06 FEET; THENCE S 89°36'03" E, 239.64 FEET; THENCE S 81°31'55" E, 282.90 FEET; THENCE S 77°49'42" E, 254.70 FEET; THENCE S 00°05'00" E, 100.00 FEET; THENCE S 03°15'47" W, 155.69 FEET; THENCE S 07°30'00" E, 87.30 FEET; THENCE S 00°05'00" E, 644.81 FEET; THENCE N 89°00'00" E, 402.55 FEET; THENCE S 88°19'39" W, 200.06 FEET; THENCE S 89°36'03" E, 239.64 FEET; THENCE S 81°31'55" E, 282.90 FEET; THENCE S 77°49'42" E, 254.70 FEET; THENCE S 00°05'00" E, 100.00 FEET; THENCE S 03°15'47" W, 155.69 FEET; THENCE S 07°30'00" E, 87.30 FEET; THENCE S 00°05'00" E, 644.81 FEET; THENCE N 89°00'00" E, 402.55 FEET; THENCE S 88°19'39" W, 200.06 FEET; THENCE S 89°36'03" E, 239.64 FEET; THENCE S 81°31'55" E, 282.90 FEET; THENCE S 77°49'42" E, 254.70 FEET; THENCE S 00°05'00" E, 100.00 FEET; THENCE S 03°15'47" W, 155.69 FEET; THENCE S 07°30'00" E, 87.30 FEET; THENCE S 00°05'00" E, 644.81 FEET; THENCE N 89°00'00" E, 402.55 FEET; THENCE S 88°19'39" W, 200.06 FEET; THENCE S 89°36'03" E, 239.64 FEET; THENCE S 81°31'55" E, 282.90 FEET; THENCE S 77°49'42" E, 254.70 FEET; THENCE S 00°05'00" E, 100.00 FEET; THENCE S 03°15'47" W, 155.69 FEET; THENCE S 07°30'00" E, 87.30 FEET; THENCE S 00°05'00" E, 644.81 FEET; THENCE N 89°00'00" E, 402.55 FEET; THENCE S 88°19'39" W, 200.06 FEET; THENCE S 89°36'03" E, 239.64 FEET; THENCE S 81°31'55" E, 282.90 FEET; THENCE S 77°49'42" E, 254.70 FEET; THENCE S 00°05'00" E, 100.00 FEET; THENCE S 03°15'47" W, 155.69 FEET; THENCE S 07°30'00" E, 87.30 FEET; THENCE S 00°05'00" E, 644.81 FEET; THENCE N 89°00'00" E, 402.55 FEET; THENCE S 88°19'39" W, 200.06 FEET; THENCE S 89°36'03" E, 239.64 FEET; THENCE S 81°31'55" E, 282.90 FEET; THENCE S 77°49'42" E, 254.70 FEET; THENCE S 00°05'00" E, 100.00 FEET; THENCE S 03°15'47" W, 155.69 FEET; THENCE S 07°30'00" E, 87.30 FEET; THENCE S 00°05'00" E, 644.81 FEET; THENCE N 89°00'00" E, 402.55 FEET; THENCE S 88°19'39" W, 200.06 FEET; THENCE S 89°36'03" E, 239.64 FEET; THENCE S 81°31'55" E, 282.90 FEET; THENCE S 77°49'42" E, 254.70 FEET; THENCE S 00°05'00" E, 100.00 FEET; THENCE S 03°15'47" W, 155.69 FEET; THENCE S 07°30'00" E, 87.30 FEET; THENCE S 00°05'00" E, 644.81 FEET; THENCE N 89°00'00" E, 402.55 FEET; THENCE S 88°19'39" W, 200.06 FEET; THENCE S 89°36'03" E, 239.64 FEET; THENCE S 81°31'55" E, 282.90 FEET; THENCE S 77°49'42" E, 254.70 FEET; THENCE S 00°05'00" E, 100.00 FEET; THENCE S 03°15'47" W, 155.69 FEET; THENCE S 07°30'00" E, 87.30 FEET; THENCE S 00°05'00" E, 644.81 FEET; THENCE N 89°00'00" E, 402.55 FEET; THENCE S 88°19'39" W, 200.06 FEET; THENCE S 89°36'03" E, 239.64 FEET; THENCE S 81°31'55" E, 282.90 FEET; THENCE S 77°49'42" E, 254.70 FEET; THENCE S 00°05'00" E, 100.00 FEET; THENCE S 03°15'47" W, 155.69 FEET; THENCE S 07°30'00" E, 87.30 FEET; THENCE S 00°05'00" E, 644.81 FEET; THENCE N 89°00'00" E, 402.55 FEET; THENCE S 88°19'39" W, 200.06 FEET; THENCE S 89°36'03" E, 239.64 FEET; THENCE S 81°31'55" E, 282.90 FEET; THENCE S 77°49'42" E, 254.70 FEET; THENCE S 00°05'00" E, 100.00 FEET; THENCE S 03°15'47" W, 155.69 FEET; THENCE S 07°30'00" E, 87.30 FEET; THENCE S 00°05'00" E, 644.81 FEET; THENCE N 89°00'00" E, 402.55 FEET; THENCE S 88°19'39" W, 200.06 FEET; THENCE S 89°36'03" E, 239.64 FEET; THENCE S 81°31'55" E, 282.90 FEET; THENCE S 77°49'42" E, 254.70 FEET; THENCE S 00°05'00" E, 100.00 FEET; THENCE S 03°15'47" W, 155.69 FEET; THENCE S 07°30'00" E, 87.30 FEET; THENCE S 00°05'00" E, 644.81 FEET; THENCE N 89°00'00" E, 402.55 FEET; THENCE S 88°19'39" W, 200.06 FEET; THENCE S 89°36'03" E, 239.64 FEET; THENCE S 81°31'55" E, 282.90 FEET; THENCE S 77°49'42" E, 254.70 FEET; THENCE S 00°05'00" E, 100.00 FEET; THENCE S 03°15'47" W, 155.69 FEET; THENCE S 07°30'00" E, 87.30 FEET; THENCE S 00°05'00" E, 644.81 FEET; THENCE N 89°00'00" E, 402.55 FEET; THENCE S 88°19'39" W, 200.06 FEET; THENCE S 89°36'03" E, 239.64 FEET; THENCE S 81°31'55" E, 282.90 FEET; THENCE S 77°49'42" E, 254.70 FEET; THENCE S 00°05'00" E, 100.00 FEET; THENCE S 03°15'47" W, 155.69 FEET; THENCE S 07°30'00" E, 87.30 FEET; THENCE S 00°05'00" E, 644.81 FEET; THENCE N 89°00'00" E, 402.55 FEET; THENCE S 88°19'39" W, 200.06 FEET; THENCE S 89°36'03" E, 239.64 FEET; THENCE S 81°31'55" E, 282.90 FEET; THENCE S 77°49'42" E, 254.70 FEET; THENCE S 00°05'00" E, 100.00 FEET; THENCE S 03°15'47" W, 155.69 FEET; THENCE S 07°30'00" E, 87.30 FEET; THENCE S 00°05'00" E, 644.81 FEET; THENCE N 89°00'00" E, 402.55 FEET; THENCE S 88°19'39" W, 200.06 FEET; THENCE S 89°36'03" E, 239.64 FEET; THENCE S 81°31'55" E, 282.90 FEET; THENCE S 77°49'42" E, 254.70 FEET; THENCE S 00°05'00" E, 100.00 FEET; THENCE S 03°15'47" W, 155.69 FEET; THENCE S 07°30'00" E, 87.30 FEET; THENCE S 00°05'00" E, 644.81 FEET; THENCE N 89°00'00" E, 402.55 FEET; THENCE S 88°19'39" W, 200.06 FEET; THENCE S 89°36'03" E, 239.64 FEET; THENCE S 81°31'55" E, 282.90 FEET; THENCE S 77°49'42" E, 254.70 FEET; THENCE S 00°05'00" E, 100.00 FEET; THENCE S 03°15'47" W, 155.69 FEET; THENCE S 07°30'00" E, 87.30 FEET; THENCE S 00°05'00" E, 644.81 FEET; THENCE N 89°00'00" E, 402.55 FEET; THENCE S 88°19'39" W, 200.06 FEET; THENCE S 89°36'03" E, 239.64 FEET; THENCE S 81°31'55" E, 282.90 FEET; THENCE S 77°49'42" E, 254.70 FEET; THENCE S 00°05'00" E, 100.00 FEET; THENCE S 03°15'47" W, 155.69 FEET; THENCE S 07°30'00" E, 87.30 FEET; THENCE S 00°05'00" E, 644.81 FEET; THENCE N 89°00'00" E, 402.55 FEET; THENCE S 88°19'39" W, 200.06 FEET; THENCE S 89°36'03" E, 239.64 FEET; THENCE S 81°31'55" E, 282.90 FEET; THENCE S 77°49'42" E, 254.70 FEET; THENCE S 00°05'00" E, 100.00 FEET; THENCE S 03°15'47" W, 155.69 FEET; THENCE S 07°30'00" E, 87.30 FEET; THENCE S 00°05'00" E, 644.81 FEET; THENCE N 89°00'00" E, 402.55 FEET; THENCE S 88°19'39" W, 200.06 FEET; THENCE S 89°36'03" E, 239.64 FEET; THENCE S 81°31'55" E, 282.90 FEET; THENCE S 77°49'42" E, 254.70 FEET; THENCE S 00°05'00" E, 100.00 FEET; THENCE S 03°15'47" W, 155.69 FEET; THENCE S 07°30'00" E, 87.30 FEET; THENCE S 00°05'00" E, 644.81 FEET; THENCE N 89°00'00" E, 402.55 FEET; THENCE S 88°19'39" W, 200.06 FEET; THENCE S 89°36'03" E, 239.64 FEET; THENCE S 81°31'55" E, 282.90 FEET; THENCE S 77°49'42" E, 254.70 FEET; THENCE S 00°05'00" E, 100.00 FEET; THENCE S 03°15'47" W, 155.69 FEET; THENCE S 07°30'00" E, 87.30 FEET; THENCE S 00°05'00" E, 644.81 FEET; THENCE N 89°00'00" E, 402.55 FEET; THENCE S 88°19'39" W, 200.06 FEET; THENCE S 89°36'03" E, 239.64 FEET; THENCE S 81°31'55" E, 282.90 FEET; THENCE S 77°49'42" E, 254.70 FEET; THENCE S 00°05'00" E, 100.00 FEET; THENCE S 03°15'47" W, 155.69 FEET; THENCE S 07°30'00" E, 87.30 FEET; THENCE S 00°05'00" E, 644.81 FEET; THENCE N 89°00'00" E, 402.55 FEET; THENCE S 88°19'39" W, 200.06 FEET; THENCE S 89°36'03" E, 239.64 FEET; THENCE S 81°31'55" E, 282.90 FEET; THENCE S 77°49'42" E, 254.70 FEET; THENCE S 00°05'00" E, 100.00 FEET; THENCE S 03°15'47" W, 155.69 FEET; THENCE S 0