

INN CONDOMINIUMS @ HARBOR VILLAGE

PART OF THE N.E. 1/4 OF SECTION 17, TOWNSHIP 14 NORTH, RANGE 5 EAST, S.L.B.&M.

GARDEN CITY, RICH COUNTY, UTAH

SURVEYOR'S CERTIFICATE

I, RAY C. HUGIE, A REGISTERED LAND SURVEYOR IN THE STATE OF UTAH, DO HEREBY CERTIFY THAT THIS PLAT OF INN CONDOMINIUMS - HARBOR VILLAGE @ BEAR LAKE, LOCATED IN RICH COUNTY, UTAH, HAS BEEN CORRECTLY DRAWN TO THE DESIGNATED SCALE AND IS A TRUE AND CORRECT REPRESENTATION OF THE BELOW DESCRIBED TRACT OF LAND, BASED ON COUNTY RECORDS AND AN ON-SITE SURVEY.

SIGNED THIS 26 DAY OF MAY, 1993.

Ray C. Hugie
L.S. # UT #1118

DESCRIPTION

PART OF THE N.E. 1/4 OF SECTION 17, TOWNSHIP 14 NORTH, RANGE 5 EAST, SALT LAKE BASE AND MERIDIAN IN GARDEN CITY, RICH COUNTY, UTAH.

BEGINNING AT A POINT THAT IS S24°51'46"W 832.51 FEET FROM THE NORTHEAST CORNER OF SAID SECTION 17, AND RUNNING THENCE S25°11'19"E 40 FEET, THENCE S64°48'41"W 140 FEET, THENCE S25°11'19"E 100 FEET, THENCE N64°48'41"E 45 FEET, THENCE S25°11'19"E 65.50 FEET, THENCE N64°48'41"E 80 FEET, THENCE N25°11'19"W 60 FEET, THENCE N64°48'41"E 43.50 FEET, THENCE S25°11'19"E 9.5 FEET, THENCE N64°48'41"E 14.75 FEET, THENCE S25°11'19"E 16 FEET, THENCE N64°48'41"E 42.75 FEET, THENCE N25°11'19"W 171 FEET, THENCE S64°48'41"W 86 FEET, TO THE POINT OF BEGINNING TOGETHER WITH EASEMENTS FOR ACCESS, UTILITIES, AND A SCENIC EASEMENT, AS SHOWN ON THE PLAT AND DESCRIBED IN THE DECLARATIONS.

OWNER'S DEDICATION

WE THE UNDERSIGNED, IN RECORDING THIS PLAT OF THE INN CONDOMINIUMS, HAVE DESIGNATED CERTAIN AREAS OF LAND AS COMMON AREAS INTENDED FOR THE USE BY HOMEOWNERS IN THE INN CONDOMINIUMS FOR RECREATION AND OTHER RELATED ACTIVITIES. THESE AREAS ARE NOT DEDICATED FOR USE BY THE GENERAL PUBLIC.

THE INN @ HARBOR VILLAGE, INC.
Dennis Bulluck

CONSENT TO RECORD

KNOW ALL MEN BY THESE PRESENTS THAT WE, THE RECORD OWNERS OF THE REAL PROPERTY DESCRIBED HEREON, DO HEREBY CONSENT TO THE RECORDATION OF THIS SURVEY OF

Dennis Bulluck
THE INN @ HARBOR VILLAGE, INC.

CITY ATTORNEY

APPROVED THIS 12 DAY OF NOV, A.D. 1993, BY THE GARDEN CITY ATTORNEY.

BEAR LAKE SPECIAL SERVICE DISTRICT

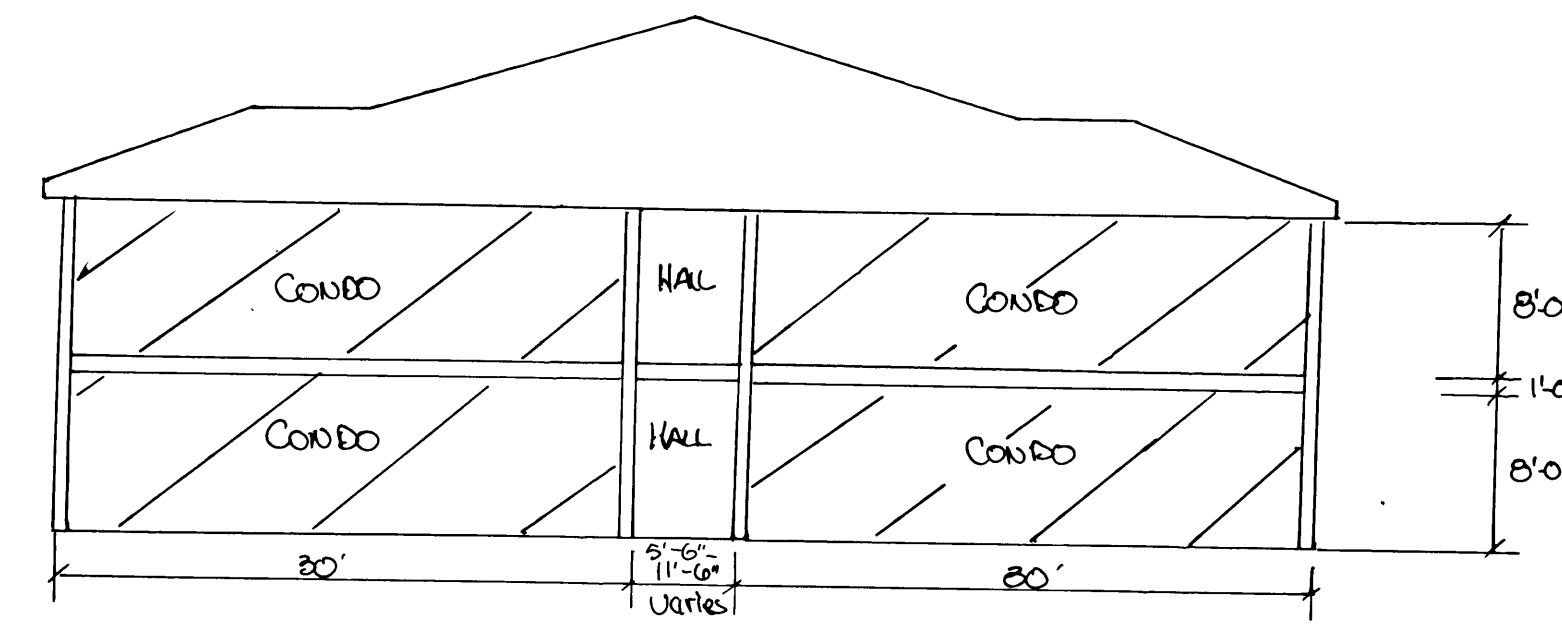
APPROVED THIS 10 DAY OF JUNE, A.D. 1993, BY THE BEAR LAKE SPECIAL SERVICE DISTRICT.

COUNTY RECORDER

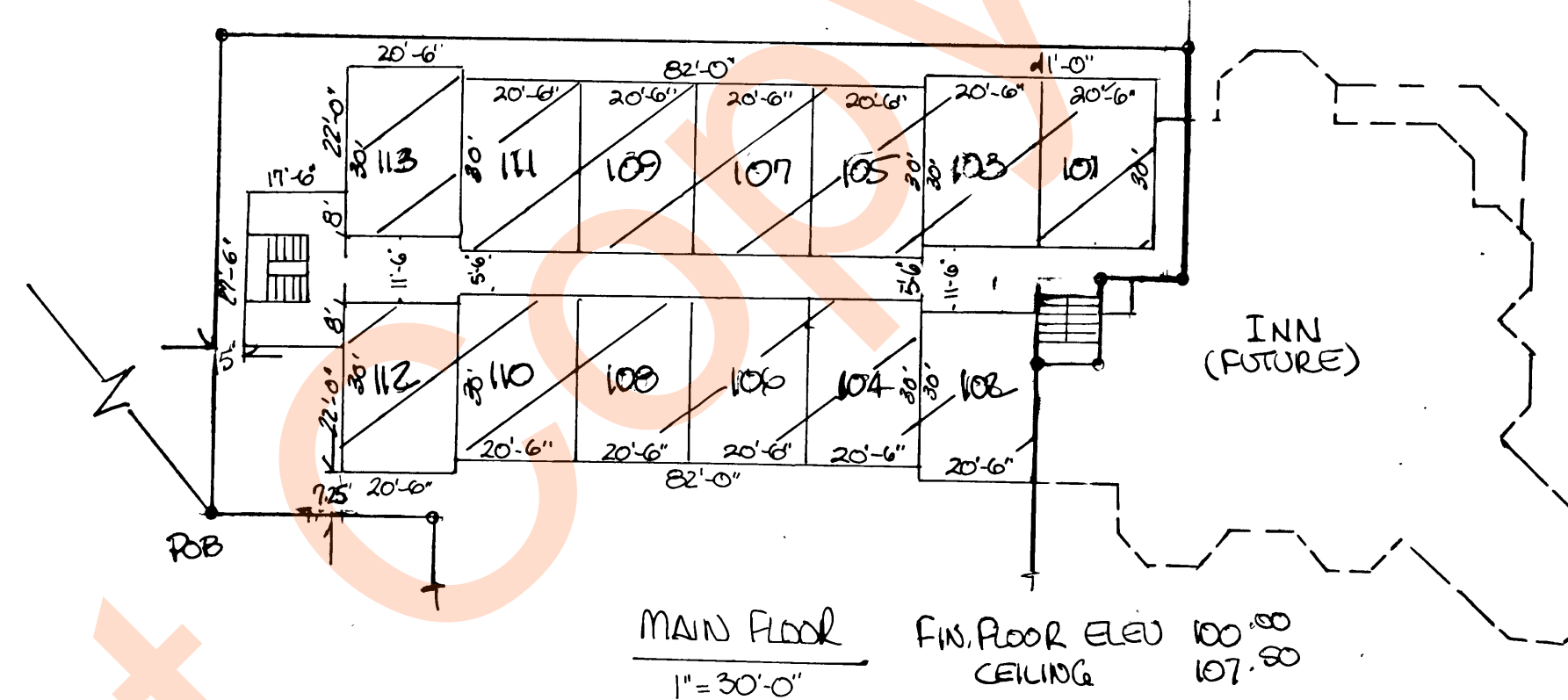
STATE OF UTAH, COUNTY OF RICH, THIS IS TO CERTIFY THAT THIS PLAT WAS FILED FOR RECORD IN THE COUNTY RECORDER'S OFFICE, THIS 17 DAY OF NOV, A.D. 1993 AT 4:01 O'CLOCK P.M. AND IS DULY RECORDED.

FILE NO. 44754
BOOK 76
PAGE 052

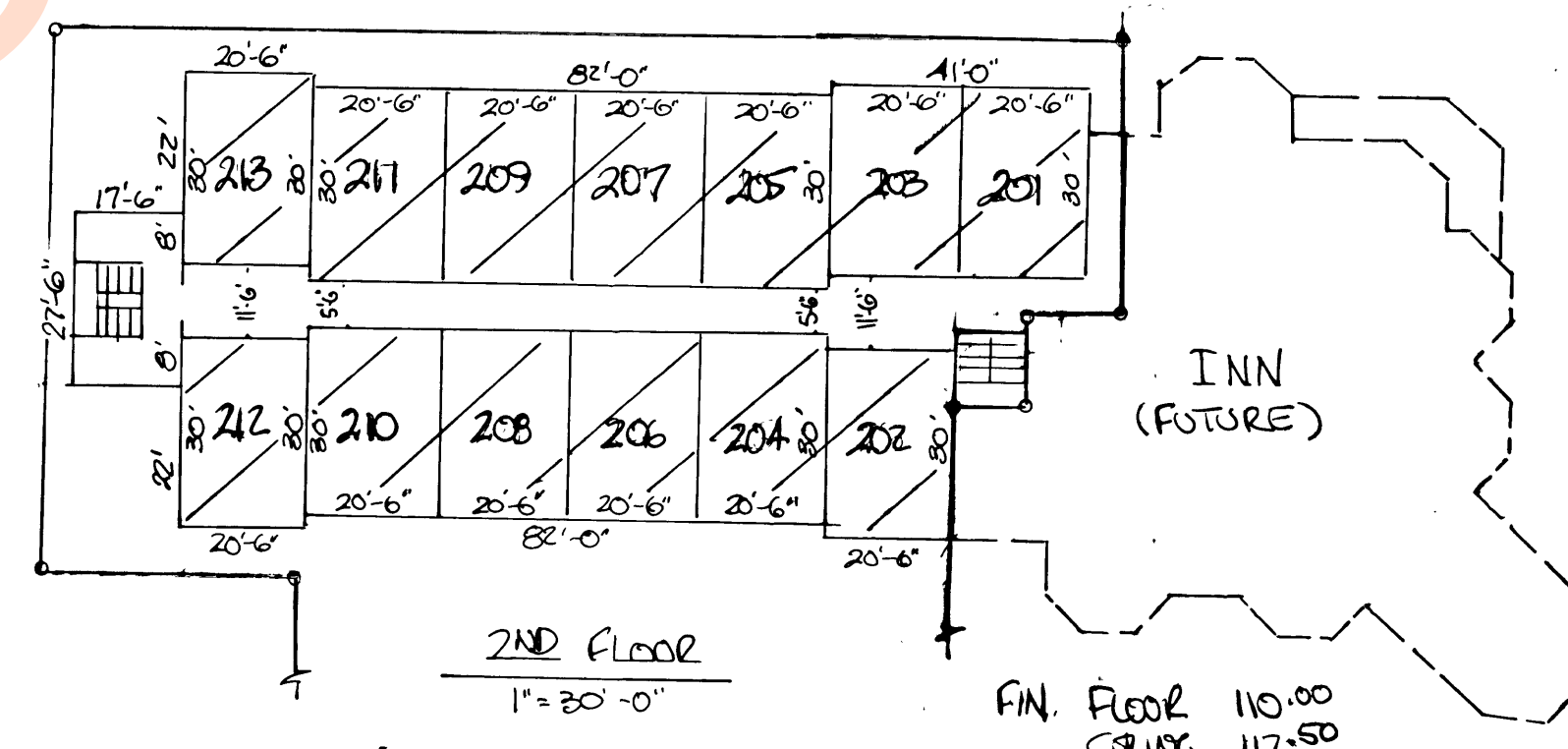
Debra Lee Ames
RICH COUNTY RECORDER
REQUESTED BY DENNIS BULLUCK



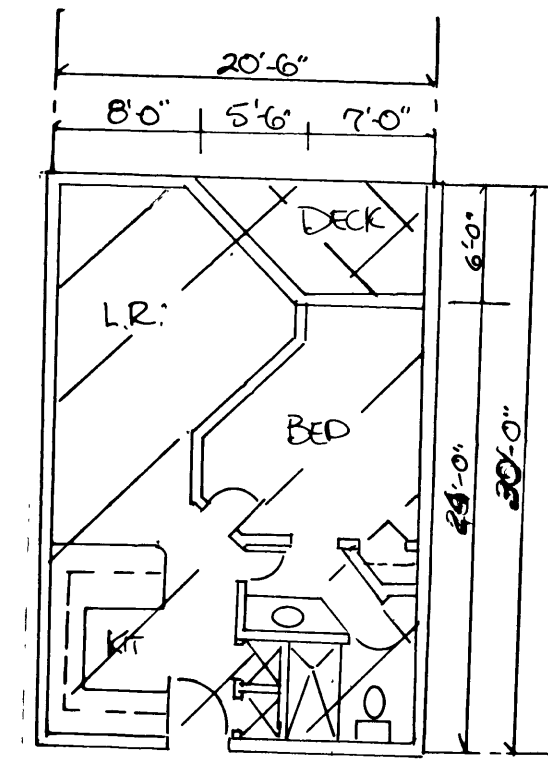
ELEVATION
1"=10'-0"



MAIN FLOOR
1"=30'-0"
FIN. FLOOR ELEV 100.00
CEILING 107.00



2ND FLOOR
1"=30'-0"
FIN. FLOOR 110.00
CEILING 117.00



TYPICAL CONDO
1"=10'-0"

- LEGEND
- ◀ STREET SIGN
 - FIRE HYDRANT
 - ▨ SCENIC EASEMENT

- PRIVATE OWNERSHIP
- COMMON OWNERSHIP
- LIMITED COMMON OWNERSHIP

ACKNOWLEDGEMENT

STATE OF UTAH, COUNTY OF RICH, I, SS. ON THE 26 DAY OF MAY, A.D. 1993, PERSONALLY APPEARED BEFORE ME, THE SIGNERS OF THE ABOVE OWNERS' DEDICATION AND CONSENT TO RECORD, AND STATED THAT THEY SIGNED THE SAME.

MY COMMISSION EXPIRES: *4/10/94*

MAYOR

APPROVED THIS 12 DAY OF NOV, A.D. 1993, BY THE GARDEN CITY MAYOR.

[Signature]

CITY ENGINEER

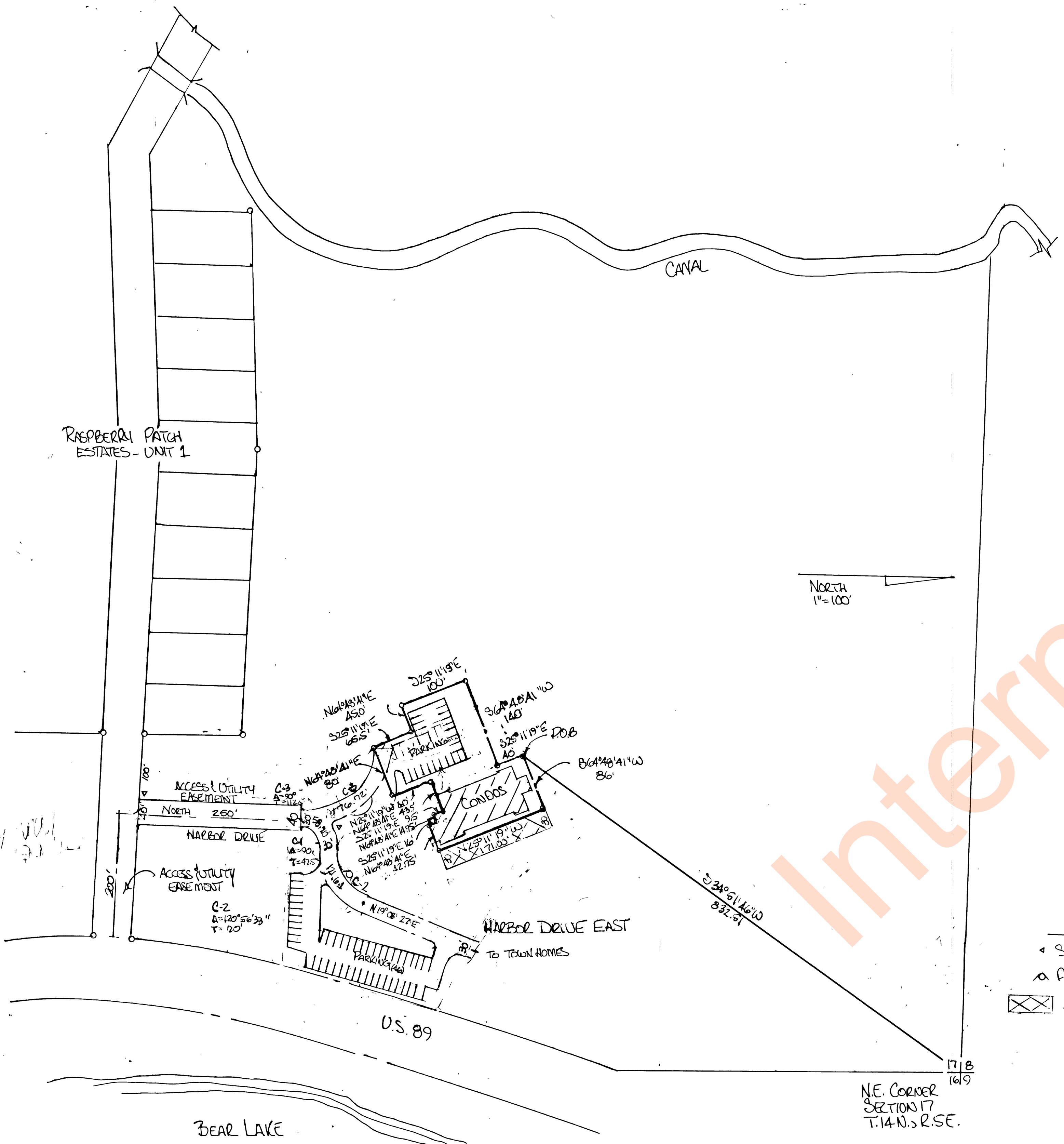
APPROVED THIS 26 DAY OF MAY, A.D. 1993, BY THE GARDEN CITY ENGINEER.

Conrad Johnson

PLANNING APPROVAL

APPROVED THIS 26 DAY OF OCT, A.D. 1993, BY THE GARDEN CITY PLANNING COMMISSION.

CHAIRMAN *[Signature]*



NORTH
1"=100'

NE CORNER
SECTION 17
T.14.N. S. R. SE.