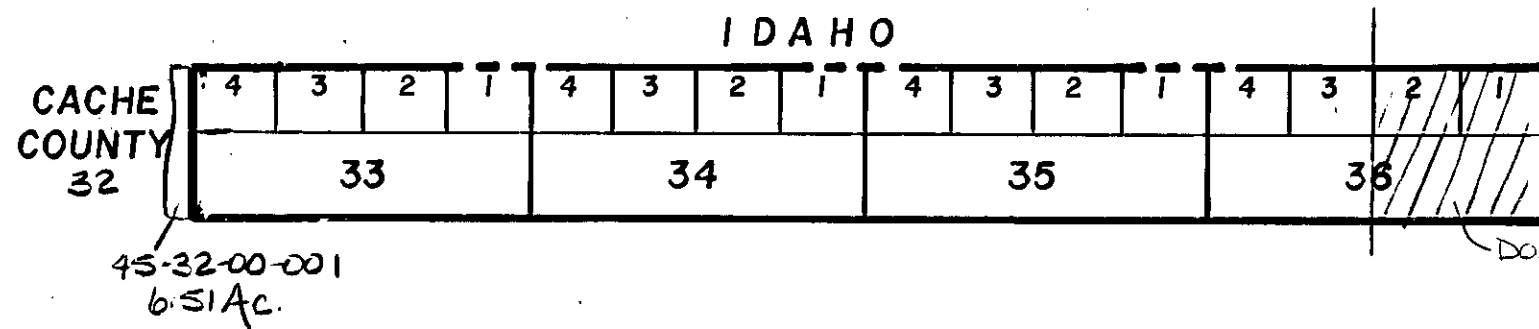


RICH COUNTY
T.15N.R.4E.,S.L.B.&M.

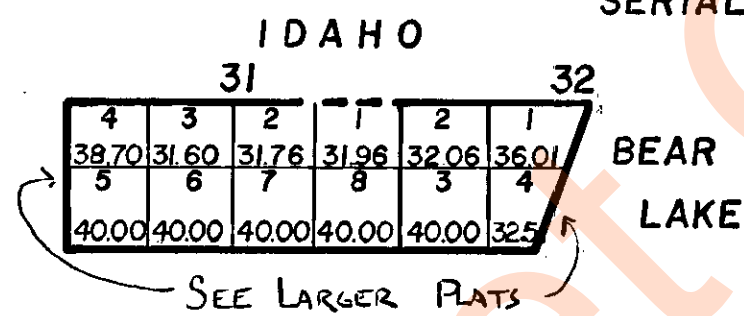
SERIAL NO.= 45-SEC.-00-PARCEL



ALL OF T.15N.R.4E. IS OWNED BY WASATCH NATIONAL FOREST

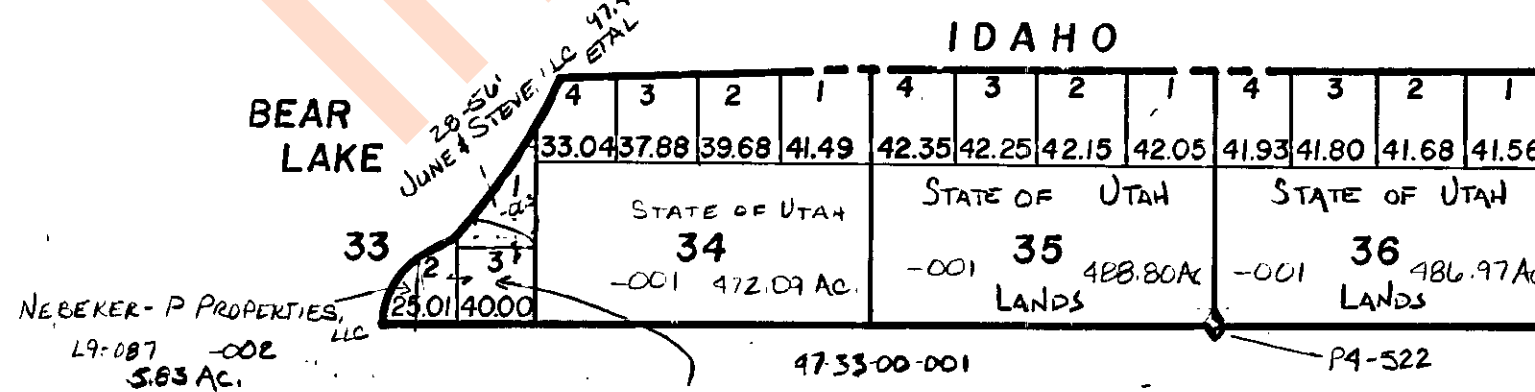
T.15N.R.5E.,S.L.B.&M.

SERIAL NO.=17-46-SEC.-00-PARCEL



T.15N.R.6E.,S.L.B.&M.

SERIAL NO.=17-47-SEC.-00-PARCEL



June Nebeker 38.9%
R & A NEBEKER LTD. PART. 58.44% DB 144
Lincoln F. White 1.3%
Gregory white 1.3%
62.66 AC.

REVISIONS	

THIS PLAT IS MADE SOLELY FOR THE PURPOSE OF ASSISTING IN LOCATING THE LAND, AND THE RECORDER ASSUMES NO LIABILITY FOR VARIATIONS, IF ANY, WITH AN ACTUAL SURVEY.

Section T.15N.R.4-6E.

book page

drawn by DW date 2-80

scale 1"=3000'