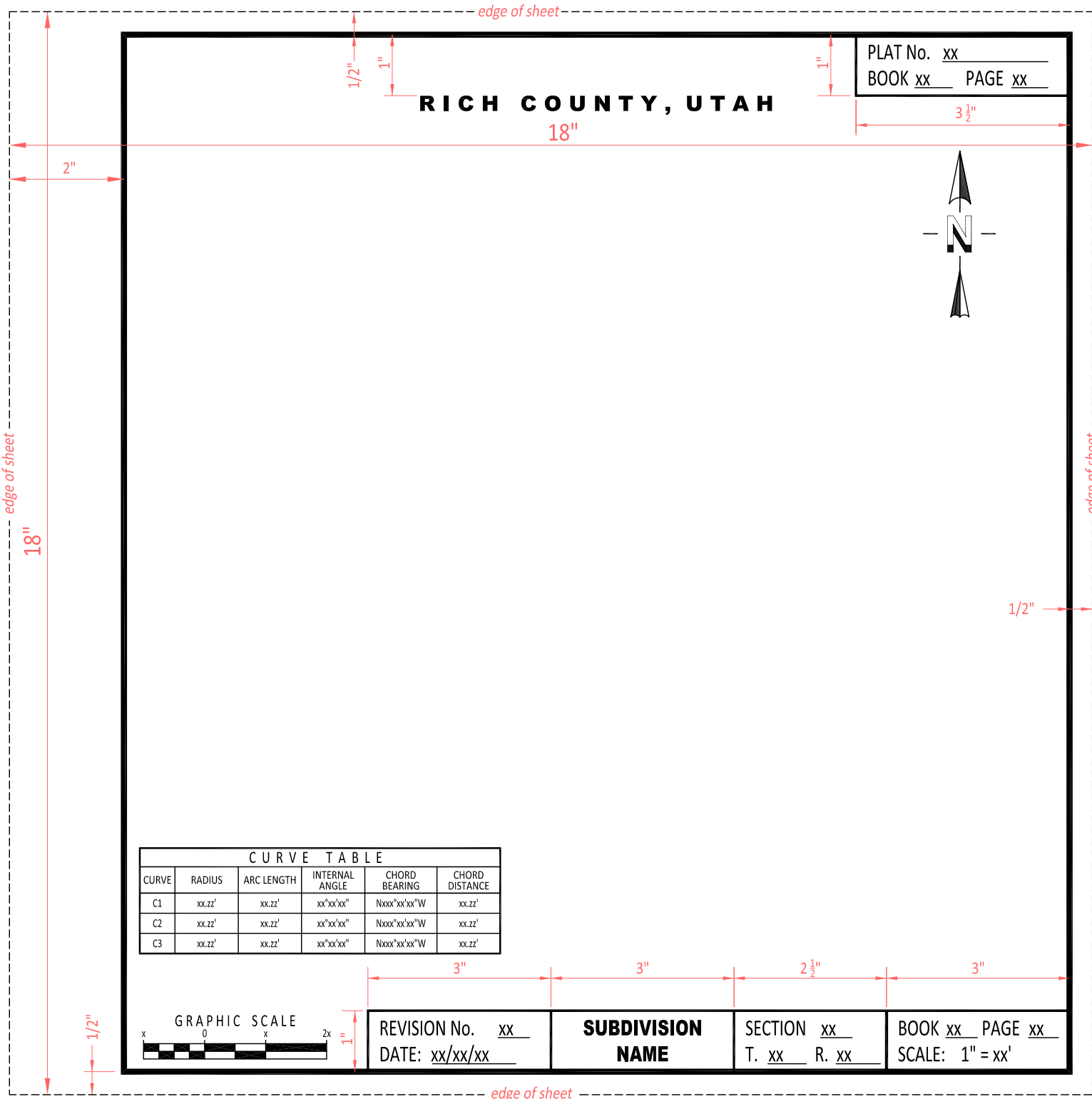


SUBDIVISION OWNERSHIP PLAT DIAGRAM



REQUIRED INFORMATION ON PLATS:

1. SUBDIVISION NAME (AS APPROVED BY COUNTY RECORDER)
2. NORTH ARROW, SCALE, AND GRAPHIC SCALE BAR
NORTH TO BE TOP OF PAGE, IF POSSIBLE
ACCEPTABLE SCALES: 1"=100', 1"=200', 1"=300', 1"=400', 1"=500', 1"=600', OR ANY ONE OF THESE SCALES DIVIDE BY OR MULTIPLIED BY 10. SCALES SUCH AS 1"=80 ARE UNACCEPTABLE.
3. TIE TO SECTION CORNER WITH BASIS OF BEARING
4. TIE AND REFERENCE TO ADJACENT PAGES
5. BLOCK, LOT LINES, AND NUMBERS
6. STREET, ROADS, AND RIGHT-OF-WAYS
7. ACREAGE AND DIMENSIONS (2 decimal places) - BEARINGS (DEGREE-MINUTES,-SECONDS)
8. CURVE DATA (CAN BE TABLED)

CAD DATA:

- TEXT STYLES**
 BOLD - ARIAL BLACK FONT (WIDTH 1.00)
 STANDARD - CALIBRI FONT (WIDTH 0.85)

USERS SHALL ADJUST THE SHEET MARGINS FOR THEIR PRINTING DEVICE TO PROVIDE THOSE MARGINS SHOWN ON THIS DIAGRAM.

THIS PLAT CAN BE DOWNLOADED FROM THE RICH COUNTY WEB PAGE IN CAD FORMAT AT [HTTPS://WWW.RICHCOUNTYUT.ORG/FORMS/SUBDIVISION OWNERSHIP PLAT.DWG](https://www.richcountyut.org/forms/subdivision_ownership_plat.dwg)